



June 2026

Vol. 24 No. 6

President's Memo

MODEL A CLUB MEMBERS,

During the month of June we will be in Mineral Wells for Texas Tour. This will be a great time to see lots of Model As and enjoy the fellowship.

I look forward to that time to see old friends and to make new ones. I wish our club could all be there. If not this year, make sure you're there next year in Canton!

I was pleased to see everyone at Bean & Burger. It's always good food and friendship. I believe we had 12 in attendance.

Barbara Quain had surgery this week and is back home. She is a joy to our club. Everyone drive your A while the weather is nice.

Sincerely,

Herman Dentler



Model A Yard Art

CLUB OFFICERS

President

HERMAN DENTLER

940-733-8803

Vice President

CHUCK CHESHIRE

972-741-8749

Secretary/Treasurer

LOU CARPENTER

903-880-9735

BOARD of DIRECTORS

SPENCER PENNINGTON
903-603-4282

JONATHAN VAGHY
817-454-2599

JODY LETCHWORTH
903-603-4969

NEWSLETTER EDITOR

NANCY CHESHIRE
nmcheshire@yahoo.com

WEBMASTER

BILL LEE
bill@wrlee.com



Mabank, Henderson Co., Texas

NAME AND PURPOSE

This club shall be known as the Cedar Creek Model A Ford Club, a non-profit organization, hereinafter referred to as the "Club."

The purpose shall be to maintain, preserve and restore the vehicle known as the Model A Ford (1928-1931) and all things pertaining to the Model A Ford, including literature, historical and technical information.

MEMBERSHIP

Application for membership shall be made in written form. Applications shall be filed with the Secretary and accompanied by dues for the current year.

RESTRICTIONS: All members of the Club shall be restricted to members of either the Model A Restorers Club or Model A Ford Club of America national clubs. Members may be accepted without ownership of a Model A Ford; however, no member shall be permitted to hold office unless said member has owned a Model A Ford within the six month period prior to the official election date.

DUES

The annual dues shall be fifteen dollars (\$15.00) per year. Dues are for the calendar year. The annual dues shall include member and wife and shall be payable before February 1st. Any member may be suspended by the Treasurer for non-payment of dues at the expiration of thirty (30) days from February 1st.

MEETINGS

Regular meetings of the members of this Club shall be held on the first Tuesday of every month unless said day shall fall upon a legal holiday, in which case the meeting date shall be established by the Board of Directors.

Table of Contents	
President's Letter	1
Photo of the Month	1
Club Officer's/ Board Members/Committee Directors	1
Charter and Life Members	2
Club Membership Information	2
Table of Contents	2
Meeting Minutes / Model A Trivia	3
Sunshine News	4
Editor's Comments	4
Birthdays	4
Club News	5
Historical Tidbit	6
Interesting Facts	7
Technical Tips	8
Upcoming Events	9
National Club News	10-11
Event Calendar/ Ads	12

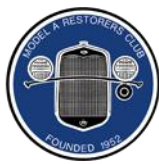
The Cedar Creek Model A Ford Club (CCMAFC) was formed in 2002 in Henderson Co., Texas. The club's meetings are held at the Dairy Queen in Seven Points, Henderson Co., Texas near Cedar Creek Lake.

Charter Members:

- John and Wanda Bell
- Jim Bellah – deceased
- Bill (deceased) and Sue Capps
- O. V. and Lorene Cliver – deceased
- S. D. "Shorty" Johnson – deceased
- Olin Lewis – deceased
- Ola Powell – deceased
- Gene Tregre – deceased



Website



MARC



A MAFCA Chapter



MAFFI



MEETING MINUTES

Cedar Creek Model A Ford Club Monthly Meeting May 5, 2026

Herman Dentler opened our meeting by leading us in the Pledge of Allegiance. Then he followed with a short prayer.

There were no guests or new members. Fredye Quain is in Runaway Bay helping with relief efforts after the tornado that struck them.

BIRTHDAYS: Carolyn Vick was our birthday girl this month. We all sang Happy Birthday to her.

MINUTES: Herman Dentler asked if everyone had gotten last month's minutes. Chuck Cheshire made a motion to accept them, and Lynda Dentler seconded it. Everyone voted to approve them as is. The financial report was given and accepted by Carolyn Vick and Chuck Cheshire.

TEXAS TOUR 2027: There is \$5600 in Texas Tour account. Gary Vick made arrangements to meet Herman Dentler in Athens to add him to the bank account and set up getting notifications. Nancy Cheshire has completed the flyer for the tour so it will be ready to be included in this tour's booklet. Kathleen Vaghy and her daughter did the logo. Myles Pennington has the web site for the tour set up. Spencer Pennington will be emcee at the tour. We will have the Hubley Derby and a fashion walk. Myles will be in charge of loading photos for the slide show. Nancy, Myles and Herman will have a meeting soon with the Canton Visitors Bureau.

NEW BUSINESS: We decided this fall would be a good time to take the tour to Oklahoma and Arkansas. Nancy Cheshire will plan the drive, places to eat, and hotels to stay at. While in Arkansas we will stay at Queen Wilhelmina State Park in Arkansas. Last stop will be Texarkana.

DIRECTORIES: New directories were passed out. Lou Carpenter will mail out of town members their copy.



The Ford Model A featured a conventional, unsynchronized 3-speed sliding-gear manual transmission (often called a "crash box") and 1 reverse gear. Because it lacked synchronizers, drivers had to master double-clutching. It had a 3.12:1 ratio in 1st, 1.85:1 in 2nd, and a direct 1:1 drive in 3rd. [1, 2, 3, 4, 5]

Key Trivia & Fun Facts

The Original Clutch: Early 1928 Model A's used a multiple-disc clutch system borrowed from the Model T. Ford eventually replaced this with a more conventional dry single-plate clutch.

Lincoln Roots: The transmission was heavily scaled down from the larger Lincoln transmissions of the late 1920s.

Straight-Cut Gears: Unlike modern manual transmissions that use helical gears, the Model A's gears are "straight-cut" (spur gears). This accounts for the distinctive, loud whining noise they make in first and second gear.

Go-Slow Champion: Reverse gear has a higher gear ratio (3.75:1) than first gear (3.12:1). If you ever want to win a "go-slow" race, the Model A is practically designed to crawl when in reverse.

Cruising Speeds: In high gear (3rd), the engine turns at a 1:1 ratio. Because of this, 45 to 50 mph is the universally recommended comfortable cruising speed; pushing it up to 55 or 60 mph risks over-revving and over-taxing the Babbitt bearings.

Model AA Truck Differences: While standard passenger cars used the 3-speed transmission, the heavier Model AA trucks featured a robust 4-speed transmission, and some even came with an optional 2-speed auxiliary gearbox.

Modern Upgrades: Because of the lack of modern synchronizers and high cruising RPMs, many vintage restorers and enthusiasts modify their Model A drivetrains by adding an aftermarket overdrive unit or swapping in a Ford T5 5-speed transmission.

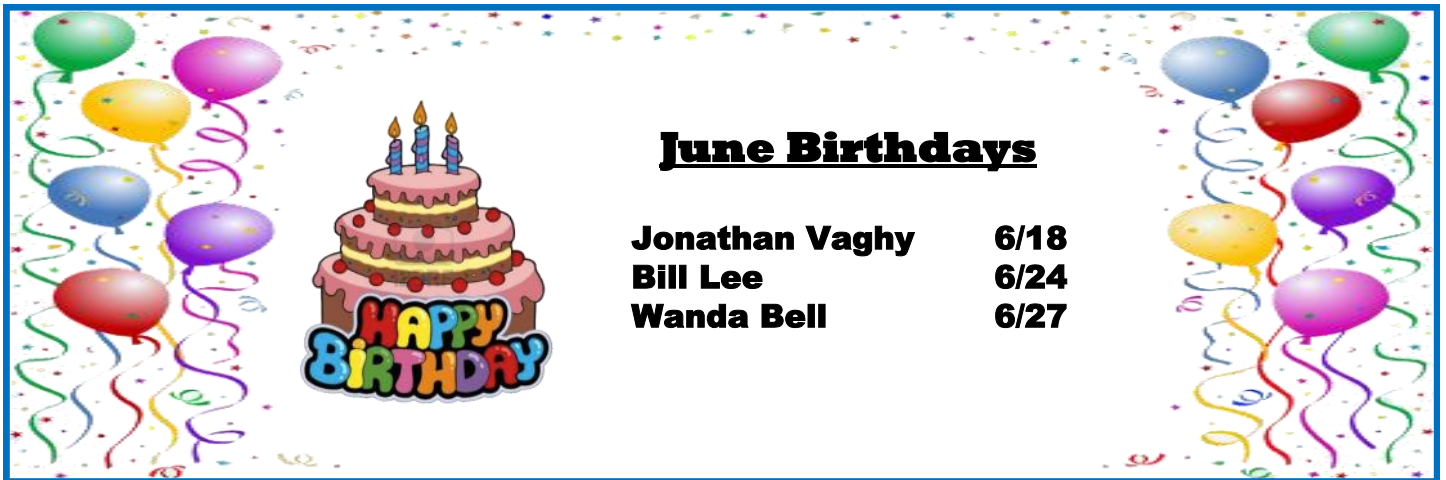
Many thanks to Nancy Cheshire for formatting them and then printing them on her home printer. She did a lot of hard work and saved the club several hundred dollars.

LUNCH: We will eat at Bean and Burger in Mabank at 1PM May 13th for lunch.

Carolyn Vick and Lynda Dentler made a motion to adjourn.

Sincerely,

Lou Carpenter Secretary/Treasurer



June Birthdays

Jonathan Vaghy	6/18
Bill Lee	6/24
Wanda Bell	6/27



Sunshine News

By Lou Carpenter

Anna Hellebrand is now staying with one of her daughters in Dallas.

Nancy Cheshire is doing PT at home in hopes of not having surgery on her shoulder.

Barbara Quain is recuperating from surgery.

Please let Lou Carpenter know if you are having health problems.

We Care!

From the Editor

Hello Everyone,

June is here and the annual Texas Tour. We will miss it this year as we will be celebrating our 60th wedding anniversary.

Nancy Cheshire



"I gave my father \$100 and said, 'Buy yourself something that will make your life easier.' So he went and bought a present for my mother."

- Rita Rudner

"You can tell what was the best year of your father's life, because they seem to freeze that clothing style and ride it out."

- Jerry Seinfeld

"My daughter got me a 'World's Best Dad' mug. So we know she's sarcastic."

- Bob Odenkirk

A little boy went up to his father and asked: "Dad where did I get my intelligence from?" The father replied: "Well son, you must have got it from your mother, 'cause I still got mine."

HOW OLD CARS & OLD MEN ARE ALIKE

By Roy Sheridan

They don't work well when cold
 They emit more fumes
 They have more wrinkles
 They take longer to get up to speed
 Their resale is lower
 Used parts are hard to find
 They like to be in the garage
 They don't have much mo-hair left
 They don't see well in the dark
 Leak in some joints
 They won't run for the wife
**HAPPY FATHER'S DAY
 TO ALL OUR DADS!**

- from the *Quail Call*. San Diego A's

May Lunch at Bean & Burger in Mabank

Good food & fellowship



Knowing Your Model A True or False

Each month we endeavor to ask a few questions to see if you are aware of the parts on your Model A and just maybe how they work. I hope you find this month's questions and answers both interesting and thought provoking.

QUESTIONS

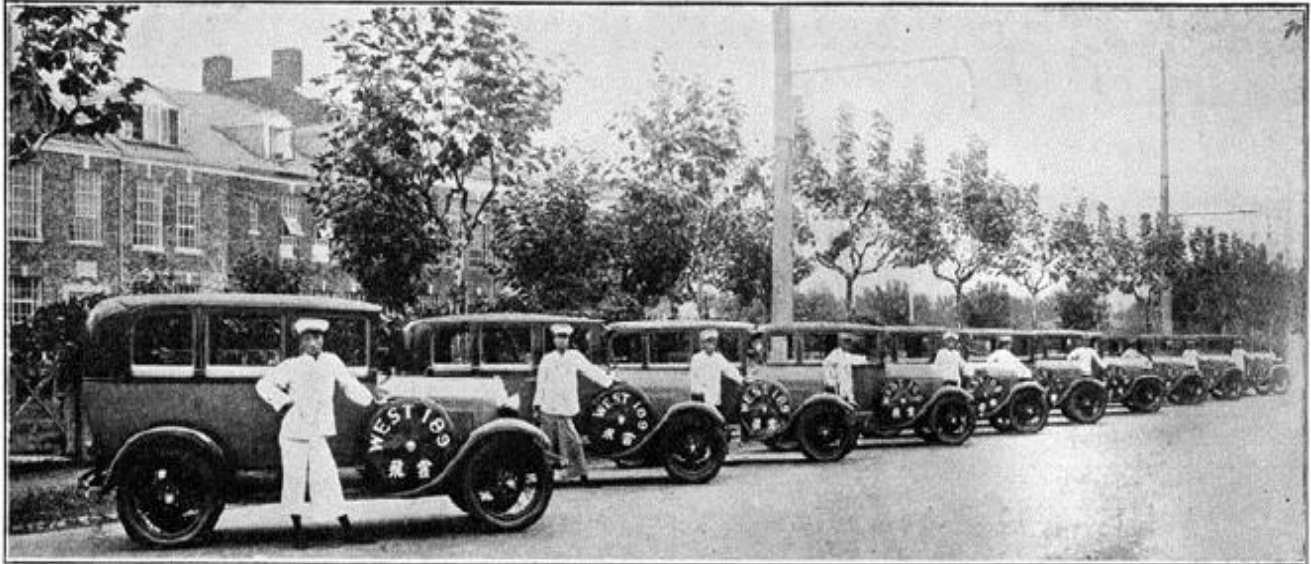
1. Springs are located on the Cap Bolts between the upper and lower Radius Rod (Wishbone) ball Caps.
2. Each Dealer was shipped and billed for \$375 worth of selected parts to ensure they had an adequate supply of parts for future work.
3. Each Dealer was informed that they should purchase special tools directly from the K R Wilson company for \$72.
4. Original Batteries had the Negative (-) terminal on the right-side front corner. This allowed the Battery to Starter cable to be short.
5. Roadster rear end gear ratios were designed to be 3.54:1, due to the light weight of the cars.

ANSWERS

1. False – The front Radius Rod (Wishbone) ball Cap bolt sleeves must be installed to prevent the springs from being fully compressed when the nut is tightened down. Service Bulletin 03/15/28.
2. True – Each Dealer was shipped and billed for \$375 worth of selected parts to ensure they had an adequate supply of parts for future work. Service Bulletin 12/23/27.
3. True – Each Dealer was informed that they were to purchase \$72 of special tools directly from the K R Wilson company. Service Bulletin 03/21/28.
4. False – Original Batteries had the Negative (-) terminal on the left-side front corner. This was later changed to the right-side front corner which allowed the Battery to Starter cable to be shortened. Service Bulletin 05/25/28.
5. False – Roadster rear end gear ratios were changed from 3.70:1 to 3.54. Service Bulletin 09/12/28.

Submitted by Tom Eldhardt From the Columbia Crier, Tri-cities, Washington

Historical Tidbit



“Taxi” in Shanghai Means “Ford”

TEN years ago Mr. J. K. Gold, a graduate of the University of Wisconsin, found himself in China with a desire to keep himself busy and, if possible, to make some money.

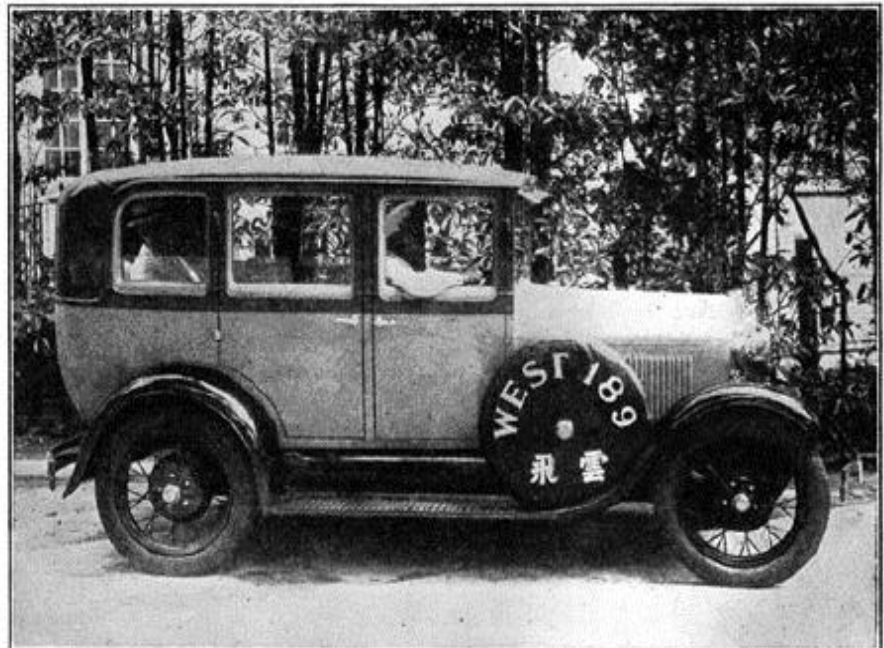
With this urge he decided that transportation was an activity with a future so, from various sources, he gathered together fifteen old touring cars and established himself in a modest taxi and car-hire business.

It proved to be a capital idea for, without presenting all of the subsequent history of the enterprise, we can now report that the company, known as Ford Hire Service, now is the largest taxicab company in China, with a growing fleet of 100 cars and employing 300 people.

Until the arrival in China of the Model A, use was made of Model T Fords exclusively. But the company is always up-to-date in its operations and is now replacing its former fleet with Model A chassis. The bodies are constructed in the shops of the company and are built of a special wood imported from the Philippines.

pleted taxicabs as well as a Model A fleet recently completed, and which will be followed by nine similar groups to complete ten units required for the service. While the company

has several branches the main office is located at 77 Route Vallon, Shanghai. Mr. R. W. Brewer, manager, was kind enough to send us the facts and photographs.



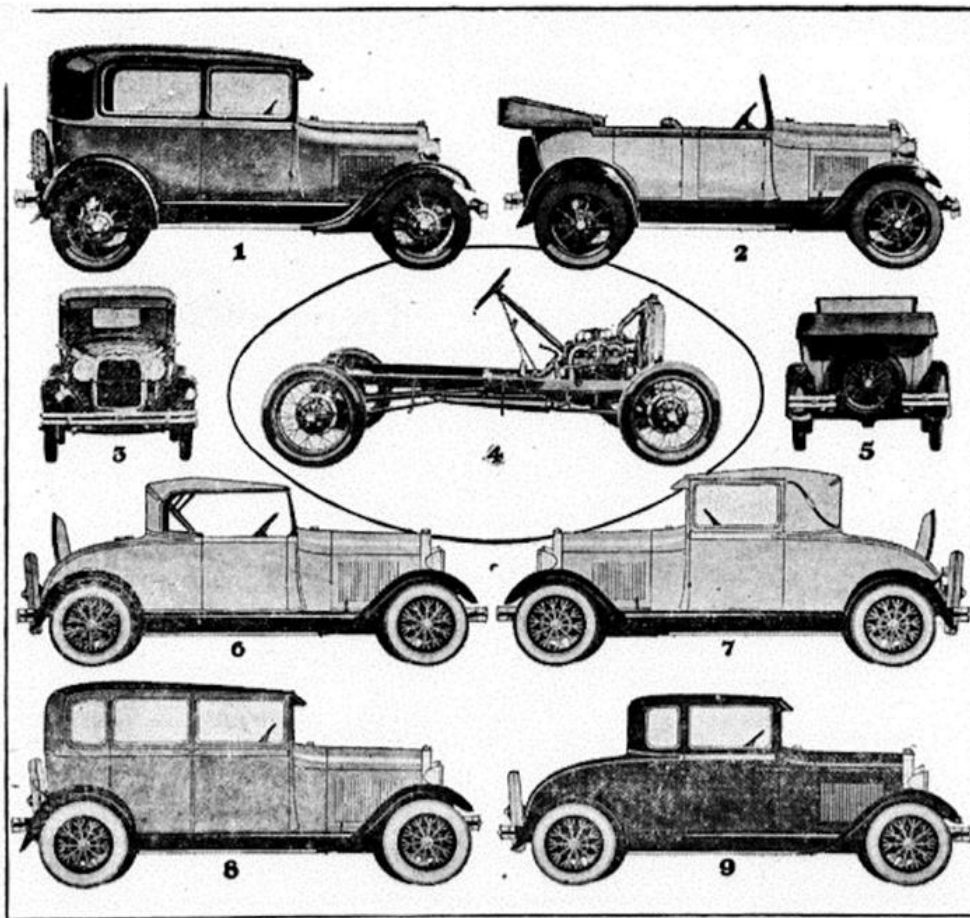
One of the Popular Chinese Cabs Mounted on the Ford Chassis

Interesting Facts

ENGINE LUBRICATION

The engine lubrication system is an exclusive Ford development and is a combination of pump, gravity feed and splash system with oil reservoir in the valve chamber. The pump is located in the bottom of the oil pan and is run off a gear on the camshaft on the same shaft which operates the distributor. It is enclosed in a fine mesh wire screen through which the oil filters before it is pumped up into the valve chamber. The screen is surrounded by a shield so that the oil is pulled through it. The oil flows into the valve chamber in a continuous stream when ever the engine is running, but it is in no sense a "forced feed". The oil in the valve chamber provides direct gravity feed lubrication to the main bearings of the crankshaft and the front end of the camshaft bearing. Small pipelines lead down from the valves to these bearings. The bottom of the valve chamber is so designed, through the use of small inbuilt dams, to provide reservoirs of oil for each bearing. As the engine rests in the chassis, on a three-degree angle sloping to the rear, the oil arriving in the valve chamber flows back, filling each reservoir, the overflow oil being carried by an external pipe down to the front end of the oil pan, where it flows back into the pan, filling the troughs through which the connecting rods are lubricated and from which all other moving parts are sprayed by the splash system. From the pan the oil flows to the bottom of the case to be pumped back again.

Ford Motor Company, 1928



FIRST AUTHENTIC PHOTOGRAPHS OF THE NEW FORD CAR

The six body models and chassis of the new Ford car are shown above. The new car has graceful, distinctive lines, exceptional power, unusual speed and getaway. It has been driven at more than sixty miles per hour; accelerates from 5 to 25 miles per hour in 8½ seconds in high gear; travels 40 miles per hour in second gear; is fitted with three-speed transmission of Lincoln

design and is completely equipped. Each model is offered in a number of bright optional color combinations. No. 1 is the new Tudor; 2 the new Phaeton; 3, front view of the new Tudor; 4, the new Chassis; 5, rear view of the Phaeton; 6, the new Sport Roadster; 7, the new Sport Coupe; 8, the new Fordor Sedan and 9, the new Coupe.

The Most Expensive Vehicle to Operate in 2026



Technical Tips

Summer is here, and it will be a hot one! Make sure you and your Model A are ready.

You:

- Always keep well hydrated
- Protect yourself with a hat and sunscreen
- Eat lots of *ice cream*

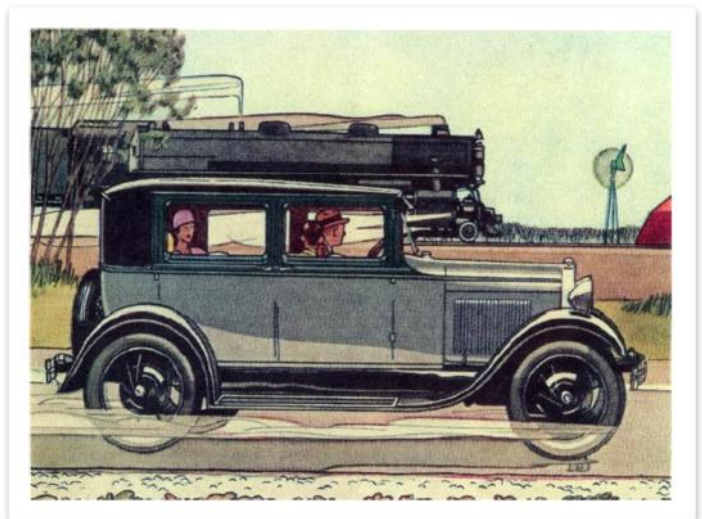
Your Model A:

- Inspect the cooling system, including the radiator, hoses, and water pump
- Ensure proper coolant levels
- Inspect tire tread depth and sidewalls (dry rot is not your friend)
- Have a functional spare tire, jack and lug wrench
- Pack a first aid kit, flashlight, and brake tools
- Make sure you have your AAA card (maybe even AAA Plus)

- from Diamond Tread A's
Rex Bartholomew, editor

Often forgotten Tech Tip

In the summertime you should check your battery often. Because of the hot, dry weather, check not only the water in the battery cells, but for corrosion on cable terminals. Corrosion prevents good contacts and causes loose cables which in turn prevents the generator from doing its job of keeping the battery "hot." Take that extra minute or two and give your battery some attention next time you plan to take your "A" for a ride. Many of us prefer to use distilled water in the battery.



- Pine Tree A's

UPCOMING EVENTS

63rd Model "A" Ford Texas Tour

JUNE 11-14, 2026 MINERAL WELLS, TX



HOSTED AT THE
HISTORIC CRAZY
WATER HOTEL

**REGISTER
NOW!**

Online or mail in registration available
<https://2026texasmodelatour.org>



THE CRAZY WATER HOTEL



BLUE OVAL CAR BARN



back



crew & v-neck

EVENT T-SHIRT

JOIN US

Hosted by the Fort Worth Model "A" Ford Club, the 63rd Texas Tour offers a variety of activities highlighting the historic charm of Mineral Wells, Texas. The host hotel and event venue is the fully restored Crazy Water Hotel.

EVENT HIGHLIGHTS

- Welcome and farewell banquets
- Planned early bird activities
- Multiple mini tour options
- Era Fashions
- Blue Oval Car Barn
- Grand Tour with catered lunch
- Game night with ice cream
- Within walking distance of the historic Baker Hotel

Hotel Information: mention "Texas Tour" when booking for block discount

The Crazy Water Hotel: (940) 325-4605

Red Lion Inn: (940) 325-7829

NATIONAL CLUB NEWS



The Model A Restorers Club, Inc.

THE running BOARD REPORT

From Tom Hovetter, President and Jim Zimmer, Director of Regions

June 2026

Much of the time spent at Board meetings involves the financials of your club. Expenses continuously rise and we are constantly looking for ways to cut or eliminate costs to you. To that end, your Board of Directors has voted (unanimously) to sell the office building in Garden City, Michigan. We have no plans to occupy another space at this time, but the building has been virtually vacant for several years with no changes predicted for the foreseeable future. The contents are safely stored and monies will be placed in an interest bearing account separate from our general treasury.

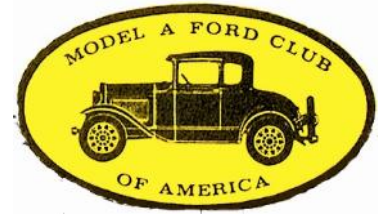
Are you aware that if your club is a "mixed" region of MARC members, MAFCA members and members with no affiliation that ONLY members of MARC are covered by our liability insurance? Region members with no MARC membership number cannot be considered part of MARC and therefore are not covered. While it's true that liability lawsuits are rare and unlikely, costs can be in the millions of dollars if you're sued and lose. MARC is proud to guarantee coverage to all its dues paying members as part of their payment. Speak with your non-MARC members soon and advise them of one of the benefits of MARC membership—the generous liability insurance program!

REMEMBER to make mid-season adjustments to your brakes, timing, and fluids. If you haven't greased the chassis in a couple of years, take advantage of the next nice day and spend some time with the undercarriage of your favorite car or truck (your Model A, of course!), and get those fittings cleaned and lubricated for the rest of the season. While you're there, check for rusted or missing cotter pins, corroded electrical connections (battery ground, stoplight switch) and oil drips from engine, transmission or rear axle. Your car will appreciate it!

COMPATIBILITY with today's traffic can be a daunting task while driving a Model A. For the safety of you and your passengers, why not consider installing seat belts and directional signals if you haven't done so already—if you have, offer to help a fellow club member with their installation. The LED lighting systems are easy to install, are reasonably priced from our advertised vendors, and could save your life! Of course, seat belts are also life savers, but will need to be custom installed.



MAFCA News



It is so nice to have our Model A's back on the roadways and touring again. The five local clubs that I belong to have a full schedule of events which makes it easy to keep our wheels rolling. To make our touring as trouble free as possible my club conducts an annual Spring Tune-up Clinic which is one of our most popular events. It brings the members together socially and as technical session. This year we seemed to have more brake adjustments, but that is what the clinic is all about. The bottom line is that the members love it. The national convention in Pendleton is just around the corner and I hope many of you are planning to attend. The schedule has so much to it assures us that we will have a wonderful time. Please make it a point to visit with the board members when you get a chance as we look forward to hearing from you and what is going on in your local chapter.

Serving on the MAFCA board of directors is a great way to give some time back to the Model A hobby and there is still time for you to send in your application as a candidate. If you are in Pendleton contact me or Trish Evans and your application can be processed on there, or you can contact Trish at membership@mafca.com for the application.

In closing, I hope you saw the major announcement that the long awaited Revision 5 of the Restoration Guidelines & Judging Standards is ready to pre-order. This revision represents years of work by the dedicated MAFCA & MARC members of the Judging Standards Committee updating existing sections and adding new sections to the book. In addition, color pictures too much of the existing material. This is definitely a must-have reference book for your Model A Library. In the meantime, keep those wheels rolling.

Doug Linden, 2026 MAFCA President

MAFFI SWEEPSTAKES
Win This Beautiful
1930 FORD MODEL A TOWN SEDAN

Ticket Sales Begin March 23, 2026	Entries Close October 10, 2026	Drawing Date October 23, 2026
--------------------------------------	-----------------------------------	----------------------------------

Enter now and receive **20% MORE TICKETS** by your donation choice!

Generously donated by Ron Jennings, this stunning 1930 Ford Model A Town Sedan was lovingly restored by the Evergreen Chapter of the Model A Ford Club of America. Their team completed a full frame-up restoration including new wood, bodywork, rebuilt drivetrain, upholstery, glass, and a beautiful Ford Maroon finish, as well as brand new Goodyear tires and radiator by the MAFFI staff. The vehicle was proudly presented to MAFFI during the 2014 MAFCA National Convention in Puyallup, Washington.

GRAND PRIZE:
1930 Ford Model A Town Sedan
Winner may choose **\$15,000** cash instead.

Beautifully Restored Interior

Scan to Enter

For more information: Jarrod Williams | jarrodwilliams81@gmail.com | maffi.org

MAFFI
Sponsored
Events

2026 Model A Days
2-Day Swap Meet
Fashion, Seminars, Car Corral
Double Clutch Class, and MORE!!

September 18 & 19, 2026 9-5 PM

NEW! Friday Fashion Swap

Registration NOW Open!!

Model A PARTS SWAP

Technical Seminars, Fashion, Hall of Fame, Ride the Classics

Host Hotel: Delta Hotel
2747 11th St, Kalamazoo, MI
269.375.6000

Celebrating Model A Speedster

2026



Event Calendar

- JUN 2, 2026 Meeting at 3:00 PM. Dairy Queen at Seven Points
- JUN 11-14, 2026 Texas Tour in Mineral Wells, TX
- JUN 16, 2026 Monthly Lunch
- JUL 7, 2026 Meeting at 3:00 PM. Dairy Queen at Seven Points
- JUL 21, 2026 Monthly Lunch
- AUG 4, 2026 Meeting at 3:00 PM. Dairy Queen at Seven Points
- AUG 18, 2026 Monthly Lunch
- SEP 1, 2026 Meeting at 3:00 PM. Dairy Queen at Seven Points
- SEP 15, 2026 Monthly Lunch



Sunday, June 14th



Honor and Respect The American Flag



Patronize our Club Sponsors

a **YANKEE's** lock **SMITH** service
 Call Us For All Your Home, Auto or Business Needs
 Call **903-880-AYLS (2957)**
903-432-AYLS (2957)
 Serving the Cedar Creek Lake Area since 1995

Richard *Smith* Smith, Owner and Operator
EMERGENCY SERVICE AVAILABLE

VISA Licensed and Bonded - License Number B13379



Dairy Queen
 Danny Hampel & Shirley Leone
 Email: teddysdq@msn.com

Seven Points
 Hwy 274 @ 334
 903-432-3076

Kemp
 1218 S. Elm Street
 903-498-8222

Your Cedar Creek Model A Ford Club Meeting Host Since 2003

Mike's "A" Ford-able Parts
Mike Butcher

124 Model A Drive, Maysville, GA 30558
 email: mike@mikes-afordable.com - www.mikes-afordable.com
 Fax: 706 652 2492 - Phone: 706 652 3866
 1 888 TRY MIKE (879 6453)



Specialising in 1928 - 1931 Model A Ford Parts

BRASSWORKS

Early Ford Radiator Reproductions
 Radiator Restorations
 Custom Built Radiators



28-29
30-31
32
33-34
35
36
37-39
40-41

Radiator Cores
 Flat Tube
 Round tube
 Honeycomb
 Cartridge

Heater Cores
 Fan Shrouds

Paso Robles, CA

www.thebrassworks.net 805.239.2501