

March 2023

Vol. 21 No. 3

President's Memo

Hello again,

We started February with a very large turnout for breakfast at Tilo's. It was great to see everyone. The tour to The Old Mill Museum was a lot of fun. There was so much to see. The staff was really excited to see us drive up. They invited us back several times. Thanks, Herman for the Tour idea. Bring your ideas to the next meeting and let's plan an outing for our Model A's.

See you Tuesday for the next meeting.

Jonathan Vaghy

President 2023

CLUB OFFICERS

President

JONATHAN VAGHY

817-454-2599

Vice President

SPENCER PENNINGTON

903-603-4282

Secretary/Treasurer

LOU CARPENTER

903-880-9735

BOARD of DIRECTORS

CHUCK CHESHIRE

972-741-8749

WALT HELLEBRAND

903-833-5572

JODY LETCHWORTH

903-603-4969

NEWSLETTER EDITOR

NANCY CHESHIRE

nmcheshire@yahoo.com

WEBMASTER

BILL LEE

bill@wrlee.com





Mabank, Henderson Co., Texas

NAME AND PURPOSE

This club shall be known as the Cedar Creek Model A Ford Club, a non-profit organization, hereinafter referred to as the "Club."

The purpose shall be to maintain, preserve and restore the vehicle known as the Model A Ford (1928-1931) and all things pertaining to the Model A Ford, including literature, historical and technical information.

MEMBERSHIP

Application for membership shall be made in written form. Applications shall be filed with the Secretary and accompanied by dues for the current year.

RESTRICTIONS: All members of the Club shall be restricted to members of either the Model A Restorers Club or Model A Ford Club of America national clubs. Members may be accepted without ownership of a Model A Ford; however, no member shall be permitted to hold office unless said member has owned a Model A Ford within the six month period prior to the official election date.

DUES

The annual dues shall be fifteen dollars (\$15.00) per year. Dues are for the calendar year. The annual dues shall include member and wife and shall be payable before February 1st. Any member may be suspended by the Treasurer for non-payment of dues at the expiration of thirty (30) days from February 1st.

MEETINGS

Regular meetings of the members of this Club shall be held on the first Tuesday of every month unless said day shall fall upon a legal holiday, in which case the meeting date shall be established by the Board of Directors.

Table of Contents	
President's Letter	1
Photo of the Month	1
Club Officer's/ Board Members/Committee Directors	1
Charter and Life Members	2
Club Membership Information	2
Table of Contents	2
Meeting Minutes / February Quiz	3
Sunshine News	4
Editor's Comments	4
Birthdays	4
Club News	5-6
Historical Tidbits	7
Technical Tips	8
Interesting Tidbits	9
Feature Article	10-11
Upcoming Events	12
National Club News	13
Event Calendar	14



MARC



Website



A MAFFCA Chapter



MAFFI

The Cedar Creek Model A Ford Club (CCMAFC) was formed in 2002 in Henderson Co., Texas. The club's meetings are held at the Dairy Queen in Seven Points, Henderson Co., Texas near Cedar Creek Lake.

Charter Members:

- John and Wanda Bell
- Jim Bellah – deceased
- Bill and Sue Capps
- O. V. and Lorene Cliver – deceased
- S. D. "Shorty" Johnson – deceased
- Olin Lewis – deceased
- Ola Powell – deceased
- Gene Tregre – deceased



**MEETING
MINUTES**

**Cedar Creek Model A Ford Club
Monthly Meeting –February 7, 2023**

Jonathan Vaghy opened the meeting with the Pledge of Allegiance. He asked if everyone had gotten the minutes and if we wanted to accept them without any changes. Walt Hellebrand made a motion to accept and Freddy Quain seconded it. The financial report was given and accepted by Jody Letchworth and Walt Hellebrand.

There were no birthday people present and no guests to introduce.

Sunshine report: Gary Vick fell on the ice during the ice storm and fractured some ribs. He is sleeping in a recliner to be more comfortable but is slowing mending.

Gerald Phariss is still not doing well and is recovering from Covid.

Upcoming Events: Herman Dentler suggested a tour to the Saw Mill Museum near Tyler on Saturday, February 25th. It was decided to have the lake area people meet at Vetoni's at 10AM and drive to Canton to the Veteran's Memorial. More people will join us there. At 11AM we will leave Canton for a lunch stop at Van and then on to the museum.

Breakfast: Our breakfast this month is going to be at Tilo's in Athens on February 21.

We received an invitation to a car show in Glen Rose for August 25 thru 27. After some discussion it was agreed it was a long way to drive in the middle of summer and no one was interested in going.

The raffle brought in \$35 dollars again this month. Walt Hellebrand was our winner.

Freddy Quain made a motion to adjourn and Jody Letchworth seconded it to close the meeting.

Respectfully submitted,
Lou Carpenter Sec./Treas.



1. What is the birthstone of March?
Amethyst Aquamarine Alexandrite Emerald
2. What is the recognized flower for the month of March?
Poppy Water lily Honeysuckle Daffodil
3. What date does Saint Patrick's Day take place this month?
March 11th March 14th March 17th March 20th
4. What famous board game was invented on March 7th, 1933?
Clue Monopoly Scrabble Battleship
5. 'March comes in like a lion and goes out like a'?
6. On the 5th of March 1946, what did Churchill warn was falling across Europe?
7. The Anglo-Saxons called March "Hlyd monath" What does it mean?
8. How many months of the year, including March, have 31 days?
9. In the early Roman Calendar, March was which month?
10. The first presidential inauguration in Washington, DC was held on the 4th of March 1801. Which President was it?
Thomas Jefferson Dwight D. Eisenhower
Theodore Roosevelt Harry S. Truman
11. Which sport is associated with 'March Madness'?
12. Which Texan battle ended on the 6th of March 1836?
Battle of Alamo Battle of San Jacinto
Battle of Gonzales Battle of Goliad
13. In Roman Times, what was Ides of March?
A deadline for settling debts
The anniversary of a Roman battle
The day when gladiators would be selected
Remus and Romulus birthday

Old Mill Tour on February 25

First stop was the Canton Veterans Memorial Park and Museum. Spencer Pennington volunteers there and has the key to the front door.

Then the lineup of cars at the Farm House restaurant in Van.

Next was the tour of the Old Mill Museum in Lindale





Model A Day at Athens Christian Preparatory Academy

Fredye Quain brought both his cars and Jonathan Vaghy brought his Tudor. Jonathan's neighbor, Kandi is a teacher at the school.



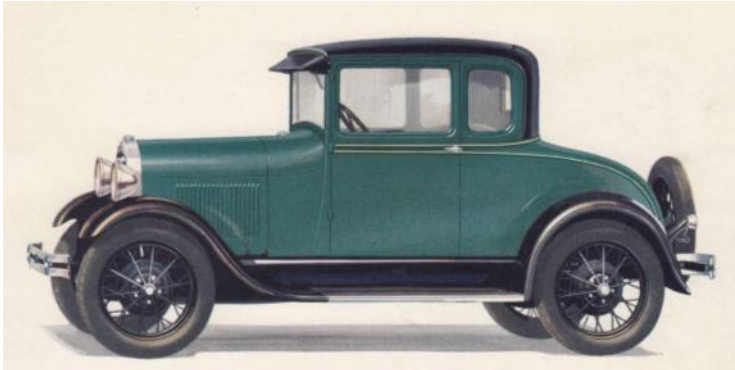
Historical Tidbit

Ad for the Body Styles for the New Model A Ford in 1928



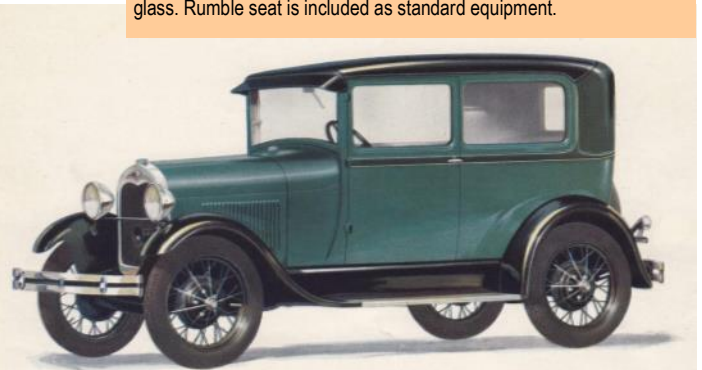
THE NEW FORD CABRIOLET

A convenient, convertible car. In summer, the airy freedom of the roadster. In winter, the comfort and protection of the coupe. The side windows, as well as the windshield are made of Triplex shatter-proof glass. Rumble seat is included as standard equipment.



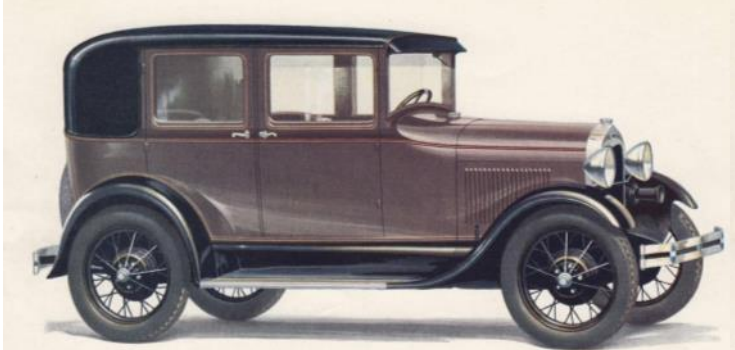
THE NEW FORD COUPE

A splendid all-year, all weather car. Narrow front pillars, two side windows, and large rear window give unusual vision. Convenient package shelf behind seat. Large luggage space in rear deck. Here also a rumble seat may be installed at small extra cost.



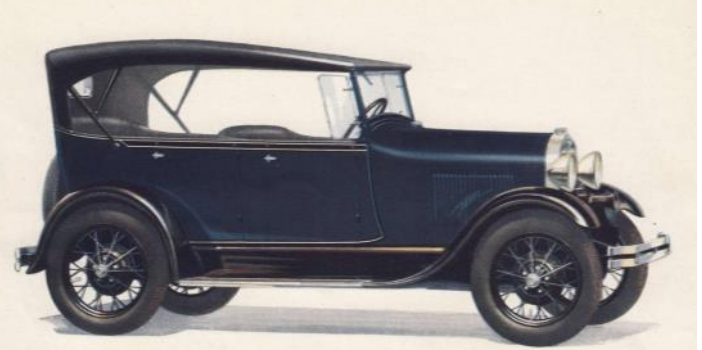
THE NEW FORD TUDOR SEDAN

The Ford Tudor is a popular family car because of its unusual safety, comfort, speed, power, acceleration, reliability, low first cost and low cost of operation and up-keep. Beautiful, colors, carefully chosen, give added charm to its trim, substantial lines.



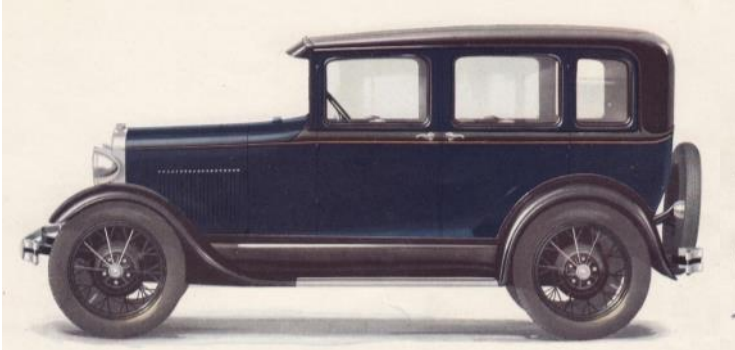
THE NEW FORDOR SEDAN

Distinguished by its simple grace of line and attractive two-tone color combinations. Generous room is provided in both the front and rear compartments. Floor in rear compartment is recessed to give extra leg room. Driver's seat is adjustable.



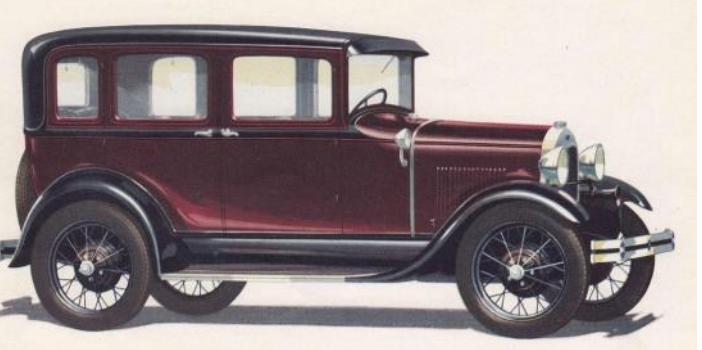
THE NEW FORD PHAETON

A low, fleet car, yet surprisingly snug and comfortable in bad weather. The top, though sturdy and substantial, can be raised easily and quickly. Side curtains, on steel uprights, open and close with doors. All four doors open forward. Unusually large window openings.



THE THREE-WINDOW FORDOR SEDAN

Shown here is one of the newest Ford Cars—the three window Fordor Sedan. Designed to seat five people in roomy comfort. Carefully finished in every least little detail and offered in a choice of unusually attractive colors. The driver's seat is adjustable.



THE NEW FORD TOWN SEDAN

Upholstered and appointed in the manner of a custom-built car. Driver's seat is adjustable. Rear seat has the new disappearing center arm and stationary arm rests at each side. Appointments of rear compartment include silk curtains, bow light and flexible robe rail.

Model A Test

The following test was borrowed from *News 'A' Letter*, Heart of America Model A Ford Club. Presented to you is the opportunity to test your knowledge regarding the Model A Ford. Under each question, circle the letter you feel is the right answer to the question.

1. What is the weight of the Model A engine, complete with clutch and transmission?
 - A. 350 pounds
 - B. 489 pounds
 - C. 475 pounds
 - D. A lot
2. What is the crankcase capacity of the Model A?
 - A. 4 1/2 quarts
 - B. 5 quarts
 - C. It depends on what weight oil you are using.
 - D. What's the crankcase?
3. What is the weight of a stock Model A flywheel?
 - A. The weight depended on the model of the car.
 - B. the weight often varied due to the manufacturer of the flywheel.
 - C. The weight varied depending on if the flywheel was statically or dynamically balanced.
 - D. The weight was 63 pounds, 4 ounces.
4. What is the piston displacement of the Model A engine?
 - A. the displacement varied on the date the engine was produced.
 - B. The displacement was 200.5 cubic inches.
 - C. The displacement was 200.5 inches for the 28-29 and 200.8 for the 30-31.
 - D. Was it it a roadster or sedan?
5. What is the brake horsepower of the Model A engine?
 - A. 40 hp at 2,200RPM
 - B. This a stupid question because brakes don't have horsepower.
 - C. 42.5 hp at 2,400RPM
 - D. 20 hp
6. Is a two-blade fan or four-blade fan more efficient on the Model A?
 - A. Absolutely the four-blade fan is more efficient.
 - B. The two-blade fan is more efficient.
 - C. Neither of the above.
 - D. Haven't used a fan in years.
7. The stock Model A fan blade delivers how much cubic feet of air per minute?
 - A. 1,389 cubic feet
 - B. 650 cubic feet
 - C. 855 cubic feet
 - D. What's cubic feet?
8. How long is the Model A connecting rod?
 - A. 7 inches long
 - B. As long as you own the car.
 - C. 7.5 inches
 - D. Just long enough.
9. What is the S.A.E. horsepower rating of the Model A Ford?
 - A. 40 horsepower
 - B. 24.3 horsepower
 - C. There is no such thing as S.A.E. rating. This rating is for oil not horsepower.
 - D. My horse has no power.
10. What is the clearance of the Model A connecting rod bearing?
 - A. .005 at 2,400 RPM
 - B. .005 at 800 RPM
 - C. .005 at any RPM
 - D. Just enough so there is no rod knock.
11. How wide is the piston pin of the Model A?
 - A. One inch
 - B. One and 7/16 inches
 - C. One and 3/16 inches
 - D. Two inches
12. The ends of the Model A valves are?
 - A. Mushroom
 - B. Flat
 - C. Convex
 - D. Concave
13. The valve tappet clearance of the Model A engine is ?
 - A. .012
 - B. The clearance depends on a variety of mechanical factors including the total miles on the engine.
 - C. 0.15
 - D. Nobody knows because the original specifications are lost.
14. Is the engine of the Model A offset?
 - A. No, this would create a balance problem.
 - B. Yes, the cylinder offset is alternated so the engine balances.
 - C. The cylinder offset is 1/8 inch.
 - D. The cylinders are opposing.
15. What is the valve stem area of the Model A Ford engine?
 - A. 2.58 at the middle of the valve.
 - B. 2.58 at the mushroom end if there is a mushroom end.
 - C. 2.58 at the concave end of the valve.
 - D. It doesn't matter.

Technical Tips

With spring just around the corner, the Model "A" will be coming out of winter hibernation. One of the things to do before driving is lubrication—Model "A" Things to Lubricate:

1. Horn (lightweight oil only)
2. Hood hook springs (regular weight oil)
3. Hood hinges (spray type oil)
4. Door hinges (spray type oil)
5. Door latch parts (spray type oil)
6. Accelerator cross shaft bearings (regular oil)
7. Accelerator linkage ends (regular oil)
8. Carburetor shafts (regular oil)
9. Distributor linkage ends (regular oil)
10. Brake rod ends (clean with spray brake cleaner; then oil with 600W oil)
11. Front and rear leaf springs (spray type oil)
12. Trunnion on clutch (600W oil)
13. Clutch release arm shaft (regular oil where production grease fittings are absent)
14. Clutch trunnion clevis pins (600W oil)
15. Clutch and brake pedal shaft bushings (regular oil where production grease fittings are absent)
16. Brake cross shaft bushings (regular oil)
17. Brake pedal to cross shaft bushings (regular oil)
18. Emergency brake clevis pins (600W oil)
19. Emergency brake cross shaft bushings on 1930-31 small shaft (600W oil where production grease fittings are absent)
20. Emergency brake shafts in backing plate (regular oil)
21. Whenever brake drums are off, oil emergency brake shaft on inside of backing plate.
22. Whenever front or rear brake drums are off, wash everything with brake cleaner then wipe all moving mechanical parts with white lithium grease
23. Spray levers inside car (light film of Vaseline)
24. Upper steering column bushing (regular oil)
25. Windshield wiper (regular oil for electrics, pneumatic oil for vacuum types)

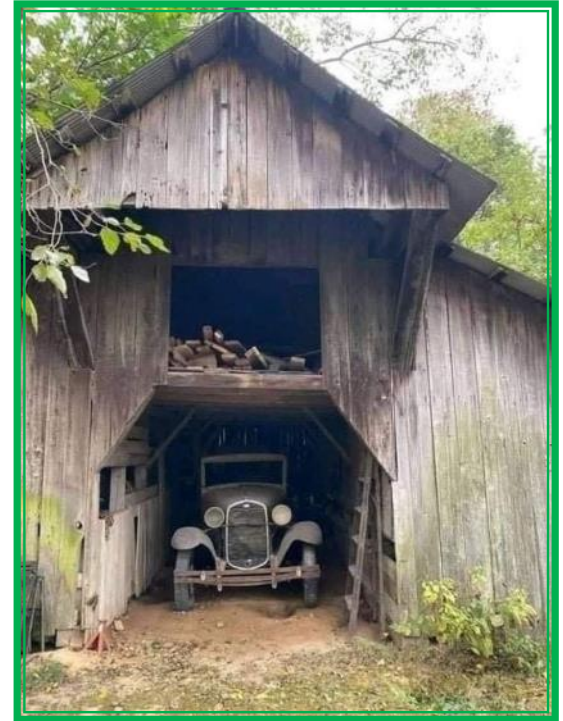


The 10 Rules of Vintage Car Ownership

1. There's always something to fix, but not right now.
2. You should sell it while it's running great, but you won't because this experience is why you own the thing in the first place.
3. No, you aren't going to make any money off it.
4. One out of 10 parts will not arrive in time for the weekend.
5. That rattle.
6. There's always a better example for sale.
7. You can never have enough spares.
8. You're never going to use all those spares.
9. Rust is an enemy worth fighting to extinction.
10. That rattle.

From the Script As

Don't You Love a Great Barn Find!



Removing an Old Screw

By John Hulstrom, Sierra Chapter

Attempting to remove a wood screw that hasn't been touched in 89 years can be difficult.

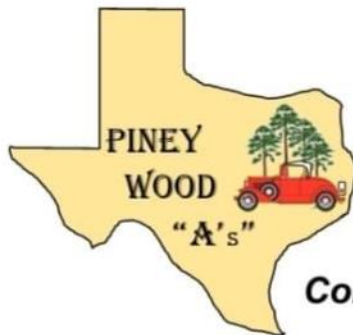
I first tried to use the *standard* screw driver. It kept slipping out of the slot.

So..., the solution: use a clamp to put pressure on the screw driver so it won't slip out of the slot. (Pic 1)

Then, use your handy Crescent wrench to apply pressure on the screw driver shaft to twist the screw out. (Pic 2)

Voilà! Out it comes. Success!!





Texas Tour 2023

June 15-18, 2023

Huntsville, Texas

Come Join Us On A Great Adventure!

Host Hotels

Fairfield Inn & Suites (Tour Registration Desk)

136 Ravenwood Village Drive Huntsville, Texas 77340

Room Rates: 50 rooms @ \$109, 19 rooms @ \$149

Phone: (936) 436-7000 Direct

Check-in time 3:00PM

Holiday Inn Express & Suites

148 I-45 Huntsville, Texas 77340

All Rooms @\$119

Phone: (936) 295-4300 Direct

Hampton Inn, located next to Fairfield Inn & Suites (alternate hotel, but has not signed a contract)

Main Event Center

Walker Education Center Located in the Sam Houston Museum Park

1402 19th Street Huntsville, Texas 77340

Texas Tour Planned Events

Short driving tours (Friday)

Grand Tour – Tour the beautiful National Forest (Saturday)

Mystery games

Many points of interest in this historical city such as the Home of Sam Houston (next to the main event center), the Prison Museum, the Military Museum, The statue of Sam Houston, and the Cemetery.

Trailer parking can be arranged.

Great Entertainment at the Award Ceremonies

Registration Fees will be announced once they are confirmed.

NATIONAL
 CLUB
 NEWS



July 16-21, 2023

Indiana/Michigan
 Hosts: Southeastern Touring Group

2023 MAFCA National Tour

Back Roads to the Classics

Join us on a circle tour of Northern Indiana and Southwestern Michigan, beginning in Auburn, Indiana, home of the National Automotive and Truck Museum, and the Early Ford V8 Foundation Museum. We will travel the Indiana countryside of the Amish and Mennonites.

Then, it is on to South Bend, home of the Studebaker National Museum and Notre Dame University's Basilica of the Sacred Heart. In Michigan, we will visit The Gilmore Car Museum, home of the Model A Ford Museum. Our travels will end back in Auburn, Indiana with the beautiful Auburn Cord Duesenberg Museum.

Info: HappyBegg, 803-622-0048.

MAFFI Newsletter Minute

MAFFI Newsletter Minute

This is the time of the year we wait for our Annual Model A Days program schedule to be announced. As of this moment the only thing known is the dates of the event, September 15 & 16. Everything else is "being planned". We know it will be exciting and a fun time for our hobby, it always is.

How many of us know the history of Model A Day Pins, and if you collect them, how complete is your stash? The pins were first cast for the 2017 Model A Days and as follows:

- A. 2017 -(date on pin back) The 1931 AA Standrive Milk Truck
- B. 2018 -1928 Prototype Town Car
- C. 2019 -1931 A400
- D. 2020 -None (Model A Day cancelled due to Covid-19)
- E. 2021 -1931 Ambulance
- F. 2022 -Telephone installers pickup

In addition there are 3 Museum pins: the 20-Millionth Ford Pin; the museum Model A Fire Truck; and the Model A Ford Museum.

So what will be added in 2023?

Mike DuBreuil, MAFFI
clubcontact@maffi.org

2023  **Event Calendar**

- MAR 7, 2023 Meeting at the Dairy Queen in Seven Points
- APR 4, 2023 Meeting at the Dairy Queen in Seven Points
- MAY 2, 2023 Meeting at the Dairy Queen in Seven Points
- JUN 6, 2023 Meeting at the Dairy Queen in Seven Points
- JUN 15-18, 2023 [Texas Tour in Huntsville, Texas](#)
- JUL 4, 2023 Meeting day
- AUG 1, 2023 ... Meeting at the Dairy Queen in Seven Points



Why do people wear shamrocks on St. Patrick's Day?



Regular rocks are too heavy.

Why did the leprechaun climb over the rainbow?



To get to the other side!

Answers from page 3—1. 1. Aquamarine 2. Daffodil 3. March 17th 4. Monopoly 5. lamb 6. Iron Curtain 7. stormy month 8. 7 months 9. 1st 10. Thomas Jefferson 11. basketball 12. Battle of the Alamo 13. A deadline for settling debts

Patronize our Club Sponsors

a YANKEE's lock SMITH service
 Call Us For All Your Home, Auto or Business Needs
Call 903 [REDACTED] (2957)
903 [REDACTED] (2957)
 Serving the Cedar Creek Lake Area since 1995
 Richard Smith, Owner and Operator
EMERGENCY SERVICE AVAILABLE
 VISA Licensed and Bonded - License Number BI3379


Dairy Queen
 Danny Hampel & Shirley Leone
 Email: teddysdq@msn.com

Seven Points
 Hwy 274 @ 334
 903-432-3076

Kemp
 1218 S. Elm Street
 903-498-8222

Your Cedar Creek Model A Ford Club Meeting Host Since 2003

Mike's "A" Ford-able Parts
Mike Butcher
 124 Model A Drive, Maysville, GA 30558
 email: mike@mikes-afordable.com - www.mikes-afordable.com
 Fax: 706 652 2492 - Phone: 706 652 3866
 1 888 TRY MIKE (879 6453)

Specialising in 1928 - 1931 Model A Ford Parts

BRASSWORKS
 Early Ford Radiator Reproductions
 Radiator Restorations
 Custom Built Radiators

28-29
30-31
32
33-34
35
36
37-39
40-41

Radiator Cores
 Flat Tube
 Round tube
 Honeycomb
 Cartridge

Heater Cores
 Fan Shrouds

Paso Robles, CA

www.thebrassworks.net 805.239.2501