

The Running Board



June 2020

Vol. 18 No. 6

President's Memo

Hello Members,

As Covid-19 upended our world, it also altered our days of driving and touring. But there are far more serious things going on than our driving. We are having mass casualties and economic impact or have a loved one who has gotten sick.

We know that with everything going on in the world we still get excited about going out for a drive. We just finished a nice drive put on by the Letchworth family. We met at Bob and Jody's house. We did about a 90 minute drive on some roads I did not know still exist, but they were made for the "A". It was a white knuckle drive but very enjoyable.

The Texas Tour is coming up in June and I know some of our members will be going. This will be a good tour and a chance for everyone to get out and relax.

The June meeting has been cancelled. Everyone please be safe as we will be able to get back together soon!

Stay safe and healthy.

Walter Hellebrand President

CLUB OFFICERS

President

WALT HELLEBRAND

972-768-3168

Vice President

CHUCK SPORTSMAN

903-833-5572

Secretary/Treasurer

SUE CAPPS

214-616-5813

BOARD of DIRECTORS

MAX WESTBRUCK

214-215-5216

GERALD PHARISS

903-603-3666

GARY VICK

214-288-1124

NEWSLETTER EDITOR

NANCY CHESHIRE

nmcheshire@yahoo.com

WEBMASTER

BILL LEE

bill@wrlee.com



Photo of the
Month -
A - 400
*
The
Summer
Time
Car



Mabank, Henderson Co., Texas

NAME AND PURPOSE

This club shall be known as the Cedar Creek Model A Ford Club, a non-profit organization, hereinafter referred to as the "Club."

The purpose shall be to maintain, preserve and restore the vehicle known as the Model A Ford (1928-1931) and all things pertaining to the Model A Ford, including literature, historical and technical information.

MEMBERSHIP

Application for membership shall be made in written form. Applications shall be filed with the Secretary and accompanied by dues for the current year.

RESTRICTIONS: All members of the Club shall be restricted to members of either the Model A Restorers Club or Model A Ford Club of America national clubs. Members may be accepted without ownership of a Model A Ford; however, no member shall be permitted to hold office unless said member has owned a Model A Ford within the six month period prior to the official election date.

DUES

The annual dues shall be fifteen dollars (\$15.00) per year. Dues are for the calendar year. The annual dues shall include member and wife and shall be payable before February 1st. Any member may be suspended by the Treasurer for non-payment of dues at the expiration of thirty (30) days from February 1st.

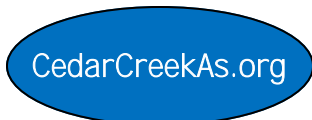
MEETINGS

Regular meetings of the members of this Club shall be held on the first Tuesday of every month unless said day shall fall upon a legal holiday, in which case the meeting date shall be established by the Board of Directors.

Table of Contents	
President's Letter	1
Photo of the Month	1
Club Officer's/ Board Members/ Committee Directors	1
Charter and Life Members	2
Club Membership Information	2
Table of Contents	2
Meeting Minutes	3
Sunshine News	4
CCMAFC News	5
Birthdays	5
Tour News	6
Era Historical Tidbit	7
Technical Tips	8
National Club News	11-12
For Sale	13
Event Calendar	14
Our Advertisers	14



MARC



Website



A MAFCA Chapter



MAFFI

The Cedar Creek Model A Ford Club (CCMAFC) was formed in 2002 in Henderson Co., Texas. **The club's meetings are held at the Dairy Queen in Seven Points, Henderson Co., Texas near Cedar Creek Lake.**

Charter Members:

- John and Wanda Bell
- Jim Bellah — deceased
- Bill and Sue Capps
- O. V. and Lorene (deceased) Cliver
- S. D. "Shorty" Johnson — deceased
- Olin Lewis — deceased
- Ola Powell — deceased
- Gene Tregre — deceased



MEETING MINUTES

The May meeting was cancelled due to COVID-19; therefore there are no minutes for this newsletter.

Respectfully submitted,
Sue Capps, Secretary/ Treasurer



Summer Solstice June 20, 2020



Enjoying the Good Ole Summertime

Model A Ford Trivia Quiz Questions With Answers

What is the Ford Model A?

A: The Ford Model A was the second successful vehicle model for the Ford Motor Company, after its predecessor, the Model T.

When was it first produced?

A: On October 20, 1927.

However, it was not introduced until when?

A: December 2.

What did it replace?

A: It replaced the venerable Model T.

How long had it produced the Model T?

A: For 18 years.

This new Model A (a previous model had used the name in 1903-04) was designated a 1928 model and was available in how many standard colors?

A: Four.

By February 4, 1929 how many Model As had been sold?

A: One million.

And by July 24, how many?

A: Two million.

The range of body styles ran from the Tudor at US\$500 (in grey, green, or black) to the what?

A: The Town Car with a dual cowl at US\$1200.

In March 1930, Model A sales hit what mark?

A: Three million, and there were nine body styles available.

More next month



Sunshine News

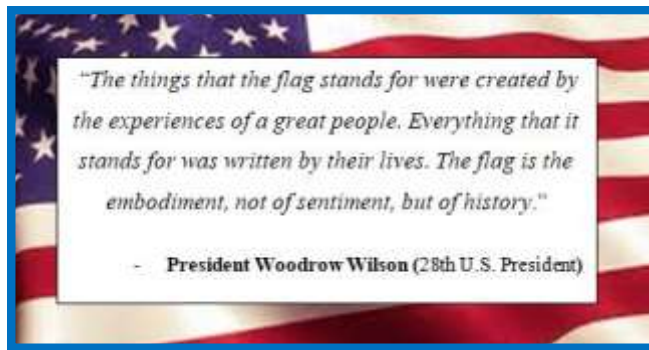
By Sue Capps

Bob Letchworth has improved and was able to lead a tour in May. Gerald Pharris was to have his pacemaker difibulator replaced. Hopefully he is feeling better.

Bill & Sandra Lee have successfully moved into their RV at a park in Wylie after selling their house. They will be building a new home soon.

Keep in touch with each other during this difficult time...

Please pray this virus will soon disappear.
Do your part to protect yourself and others.
Stay safe and healthy!



Did you know that a 17 year old boy designed our current flag?

Did you know that during the revolutionary war we used a flag that had a rattlesnake that said "Don't Tread on Me?"



Rattlesnakes are only found in the Americas. They became a symbol of courage to the Americans.



NAME OUR CLUB'S NEWSLETTER

No one else has submitted a suggestion for the name of the Club's newsletter, so until we meet again it will be left as The Running Board as suggested by the Pharisses.

The Editor

JUNE BIRTHDAYS

Happy BIRTHDAY	Christie Blakeley	06/20	
	Bill Lee	06/24	
	Wanda Bell	06/27	

FATHER – a son's first hero - a daughter's first love



A Beautiful Driving Tour

Another creative tour idea was put into place by our Bob Letchworth. The first photos were taken at the Letchworths before we began our drive. He led the group on a tour through the country. It was a very enjoyable drive on mostly gravel roads. Really felt like we were back in the olden days!

Thank you, Bob for the tour and Lou Carpenter and Anna Harris for the pictures and info!



A
Happy
Day!



It was great



to be out!



Era Historical Tidbit

1930 Model A

Ford Rustless Steel Brochure

Pictured below is an original Ford Motor Company brochure advertising the everlasting beauty and durability of Ford's rustless steel components (stainless steel).

Finding new ways to give greater value



THE story of the Ford car is the story of unusual value because Ford methods of manufacturing have found the way to include many desirable features in a low-priced car.

The Triplex shatter-proof glass windshield is one of these. Others are the large number of ball and roller bearings, the four Houdaille hydraulic double-acting shock absorbers, aluminum pistons, steel-spoke wheels, and the extensive use of fine steel forgings.

And now an additional feature of great importance . . . Rustless Steel headlamps, radiator shell, hub caps, cowl finish strip, gasoline tank cap, radiator cap, tail lamp, and other exposed metal parts. -- This bright, lustrous metal will not rust, tarnish or corrode in any kind of weather, and will last for the life of the car. There is no plate to wear off, crack or scale because it is the same bright metal all the way through.

It never requires polishing . . . you merely clean it with a damp cloth as you would a windshield. And it is exceptionally hard to dent for it has twice the tensile strength of ordinary steel.

Before this Rustless Steel was adopted by the Ford Motor Company, it was put through many severe tests. For example, in one of these tests, samples were subjected

to a salt spray for four hundred hours, the equivalent of forty years service under severe weather conditions. There was not the slightest suggestion of tarnish, rust or corrosion.

Another test, startling in its results, was made by the United States Bureau of Mines. A sheet of Rustless Steel was placed in the water in Windburne Field, the strongest corrosive water in central Pennsylvania. Miners, who had left their shovels in this field for a week or ten days, had returned to find nothing left but the handles. Steel pipes had been eaten through in a similar period. Yet after six months in this water, the Rustless Steel used on the new Ford was exactly the same weight as before immersion.

In a further test, seventy-six acids, alkalis, salts, organic compounds, poison vapors and acid gases failed to produce the slightest effect on its brilliance.

Rustless Steel is expensive to manufacture, yet it is used on the new Ford without extra cost to you . . . another indication of the high quality that is built into Ford cars.



The New Ford Town Sedan

Will next year's cars
be like this?



ALUMINUM FINISHES are proved from Alloys Steel, for it's far stronger than mild steel. It's permanently bright.

QUICK FACTS

1. Resists more corrosive agents than any other alloy.
2. Can be drawn, stamped, machined, spun, cast, forged.
3. Far stronger than mild steel.
4. Will take any finish from dull to mirror.
5. Is non-magnetic.
6. Resists denting and abrasion.
7. Is readily annealed; may be welded and soldered.
8. Is produced in practically all commercial forms.
9. Immune to chemical reactions resulting from cooking and preparation of food . . . does not affect flavor, color or purity of any food.

See next page

Technical Tips

Authentic Model A Colors in a Spray Can

Submitted by: William "Bill" Brum, Raynham, Massachusetts

Achieving an authentic look is important to many of us who choose to restore our car back to its original condition. In the area of painting, it becomes difficult without the training and equipment of a professional. However, for small items such as interior trim and other metal components, spray cans are a viable option. Once you have the paint code in hand (acquired from guidance in the MAFCA Paint & Finish Guide and the PPG or DuPont customer service group), your local distributor for such popular brands can provide the authentic colors in 12 oz. spray cans. Color matching can also be achieved by providing a good sample (I used the windshield visor) to be analyzed at your distributor by hand held color matching equipment. The spray cans are typically a single component acrylic enamel providing ease of application, excellent shine and durability. Of course, good paint finish requires proper metal prep regardless of the spray equipment utilized. The spray can shown below contains the popular Copra Drab for a 1930 coupe utilized to paint the dash panel depicted.



No doubt the Original Allegheny Metal Model A Ford

These pictures are of the one surviving 1931 Allegheny Metal Tudor Sedan. Note the standard body (no cowl lights) but with the addition of a left hand fender-mounted spare tire, same as shown in the original. It was offered in an E-bay auction for half a million dollars.

Continued from page 7



T O O L S E X P L A I N E D

DRILL PRESS: A tall upright machine useful for suddenly snatching flat metal bar stock out of your hands so that it smacks you in the chest and flings your beer across the room, denting the freshly-painted project which you had carefully set in the corner where nothing could get to it.

WIRE WHEEL: Cleans paint off bolts and then throws them somewhere under the workbench with the speed of light. Also removes fingerprints and hard-earned calluses from fingers in about the time it takes you to say, 'Oh shit!'

DROP SAW: A portable cutting tool used to make studs too short.

PLIERS: Used to round off bolt heads. Sometimes used in the creation of blood-blisters.

BELT SANDER: An electric sanding tool commonly used to convert minor touch-up jobs into major refinishing jobs.

HACK SAW: One of a family of cutting tools built on the Ouija board principle... It transforms human energy into a crooked, unpredictable motion, and the more you attempt to influence its course, the more dismal your future becomes.

VI SE -GR I PS: Generally used after pliers to completely round off bolt heads. If nothing else is available, they can also be used to transfer intense welding heat to the palm of your hand.

OXY ACETYLENE TORCH: Used almost entirely for lighting on fire various flammable objects in your shop. Also handy for igniting the grease inside the wheel hub out of which you want to remove a bearing race.

T A B L E S A W: A large stationary power tool commonly used to launch wood projectiles for testing wall integrity.

H Y D R A U L I C F L O O R J A C K : Used for lowering an automobile to the ground after you have installed your new brake shoes, trapping the jack handle firmly under the bumper.

B A N D S A W: A large stationary power saw primarily used by most shops to cut good aluminum sheet into smaller pieces that more easily fit into the trash can after you cut on the inside of the line instead of the outside edge.

T W O - T O N E N G I N E H O I S T : A tool for testing the maximum tensile strength of everything you forgot to disconnect.

P H I L L I P S S C R E W D R I V E R : Normally used to stab the vacuum seals under lids or for opening old-style paper-and-tin oil cans and splashing oil on your shirt; but can also be used, as the name implies, to strip out Phillips screw heads.



Continued on next page

STRAIGHT SCREWDRIVER : A tool for opening paint cans. Sometimes used to convert common slotted screws into non-removable screws and butchering your palms.

PRY BAR : A tool used to crumple the metal surrounding that clip or bracket you needed to remove in order to replace a 50 cent part.

HOSE CUTTER : A tool used to make hoses too short.

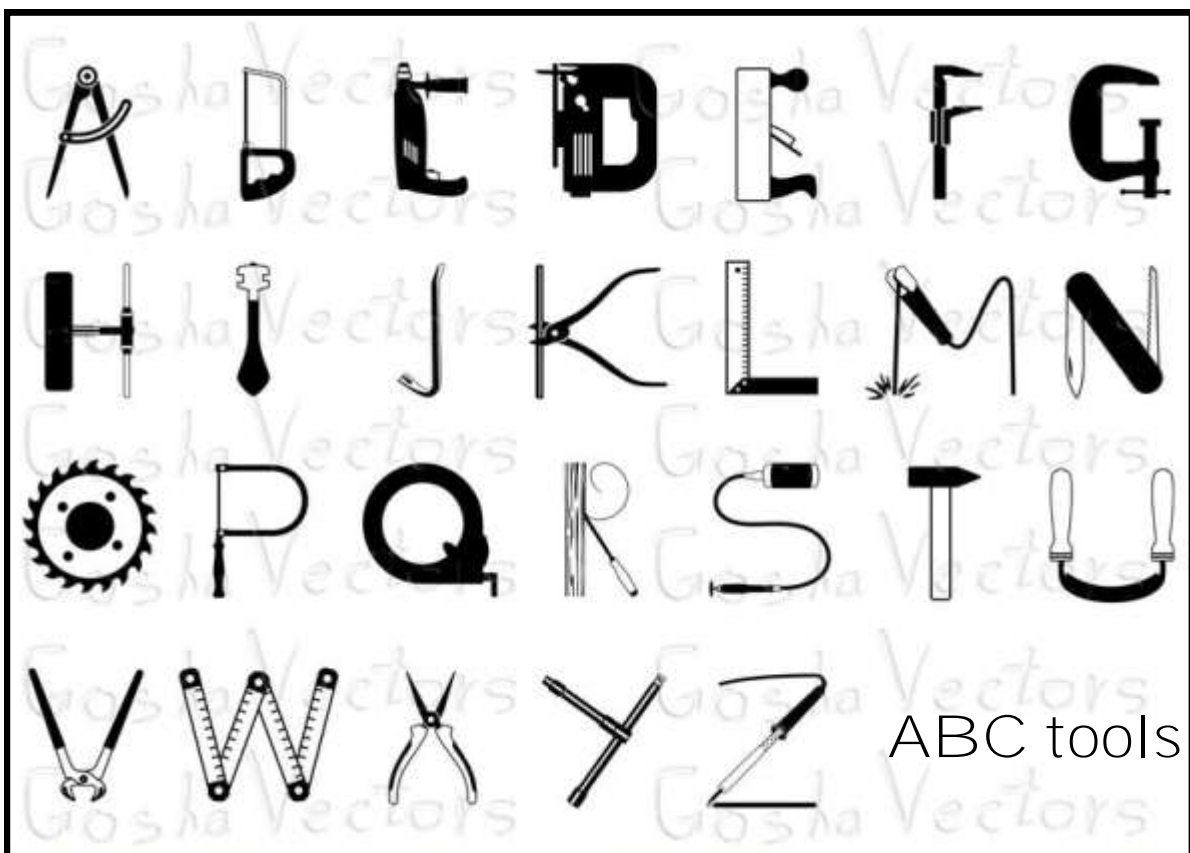
HAMMER : Originally employed as a weapon of war, the hammer nowadays is used as a kind of divining rod to locate the most expensive parts adjacent the object we are trying to hit.

UTILITY KNIFE : Used to open and slice through the contents of cardboard cartons delivered to your front door; works particularly well on contents such as seats, vinyl records, liquids in plastic bottles, collector magazines, refund checks, and rubber or plastic parts. Especially useful for slicing work clothes, but only while in use.

ADJUSTABLE WRENCH : aka "Another hammer", aka "the Swedish Nut Lathe", aka "Crescent Wrench". Commonly used as a one size fits all wrench, usually results in rounding off nut heads before the use of pliers. Will randomly adjust size between bolts, resulting in busted buckles, curse words, and multiple threats to any inanimate objects within the immediate vicinity.

[#*%&\$! T O O L]: Any handy tool that you grab and throw across the garage and yell "[#*%&\$!]" at the top of your lungs. It is also, most often, the next tool that you will need.

(This is a mutation of a column written by Peter Egan and published in Road and Track back in 1996.)



N
A
T
I
O
N
A
L

C
L
U
B

N
E
W
S



Please support
the National
Model A Ford
Organizations

MAFCA
IS OUT OF THIS WORLD

IF YOU HAVEN'T YET RENEWED YOUR MEMBERSHIP,
IT'S NOT TOO LATE
OR
IF YOU HAVE NEVER BEEN A MEMBER, THE TIME IS NOW.
VISIT MAFCA AT MAFCA.COM TO RENEW OR JOIN US. WHO
KNOWS WHAT THE FUTURE MAY HOLD?

mafca.com

Some Thoughts from Bill ...

It seems like it has been a long time since we have been able to get out in our Model A's and tour to new and exciting destinations. Actually, it has only been a few weeks. The end will come soon and we will be able to gather again to pursue our favorite pastime.

We have some really great news to share. Bob Kreipke, former Ford Motor Company historian and author of many books, including 2020's *The Ford Model A*, has agreed to be the Honorary Historian for our Model A Ford Club of America. We are delighted to have Bob join our family. You can look forward to reading articles from Bob in future issues of *The Restorer*. His insights and life-long interest in Ford products gives him a unique ability to help us all understand more about Model A history. Welcome, Bob. His new book is available on Amazon.com.

MAFCA has been working diligently on a new book about the Victoria Coupe model of Model A Fords. It is in the final stages of preparation and will be ready for ordering by mid- to late-June. It is an updated version of the original compilation of articles from *The Restorer* and the Victoria Association's *Bustle*. The new volume will include a list of Surviving Model A Ford 190-A Victoria Coupes and a table of Similarities and Differences for the 400-A, 190-A and the 180-A models. Those are the Convertible Sedan, the Victoria, and the Deluxe Phaeton. If you have an interest in Victoria's, this is a book you will want to have in your library.

I'm pleased to tell you that Chuck Christensen is back from his heart surgery and once again answering your technical questions. During his absence, Jim Cannon filled in and we thank Jim for his help. Welcome back Chuck.

All the best,
Bill Truesdell 2020 MAFCA National President





HERSHEY SWAP MEET CANCELLED

It is with great regret that the AACA Hershey Region Executive Board informs you that the 2020 Hershey Fall Meet has been cancelled. This decision was not arrived at lightly. Our Club prides itself on producing a world-class event that thousands of people anticipate every year, so we felt the heaviest of burdens when faced with this decision.

While making the difficult choice to cancel, the Board took many obstacles into account, including but not limited to: the health and welfare of our volunteers, vendors, partners, and visitors; the unknown restrictions and/or guidelines that may be in place at the time of our show; and the volunteer-only workforce we rely on to prepare for a show of our magnitude.

We appreciate you understanding how difficult this decision was for the Executive Board to make. We know that some people will be upset by the decision and others will applaud it. Either way, please know that the Hershey Region Executive Board has acted in what they believe are the best interests of the Club, and we ask for your continued support as we navigate these unprecedented times.

Refund information will be sent very soon in regards to all payments already received by the Hershey Region AACA.

Please know that we continue to explore ideas to benefit the hobby and are working toward the possibility of still hosting our usual car show on Saturday in October. While this may not be doable, AACA and the Hershey Region along with other constituencies are working hard to make this possible. Please visit our website and social media as often as possible for the latest news.



Publication—comes with your membership



The Model A Ford Museum at the Gilmore Car Museum in Hickory Corners, Michigan. Definitely worth a visit!



maffi.org

FOR SALE

1931 Tudor Sedan—color outside Copra Drab & Chicle Gray—inside gray. Very good condition. 6 volt . Asking \$13,900 obo. Call Herman Dentler at 940-733-8803



Herman is also offering a 1931 Roadster Convertible, with Rumble Seat. Recently restored . Color—outside Copra Drab & Chicle Gray, Inside Brown vinyl. Asking \$19,900. OBO



No Copra Drab & Chicle Gray car exactly matches another one, but both of these cars are the same color. One of these is in the sun and the other in the shade.

Fun Facts

A person can not fold a normal size piece of paper in half more than 8 times.

There are just over 300 million cell phones used daily in the United States alone.

A shrimps heart is in it's head.

Kissing is actually healthier than shaking someones hand.

Natural pearls will melt in vinegar.

An olive tree can live up to 1500 years.

Cleopatra married two of her brothers.

Ants can't shut their eyes.

On a Canadian two dollar bill, the flag flying over the Parliament Building looks like an American flag.

Men's shirts have the buttons on the right, while women shirts have the buttons on the left.

Chewing gum will help reduce tears when cutting an onion.

Red wine will spoil if exposed to light. Hence the tinted bottles.





Event Calendar

JUN 02, 2020 — Monthly Meeting - Cancelled

JUN 11-14, 2020 — 57th Texas Tour — Brenham , TX (Hosted by Brazos Valley As & Fort Worth MAFC)

SEP 17-20, 2020—Southwest Swap Meet —Texas Motor Speedway

OCT 1-3, 2020—PATE Swap Meet —Texas Motor Speedway

OCT 10, 2020 -- DQ car show in Seven Points 11am

DEC 05, 2020 -- Meeting Christmas party — Tri County Library. Community Room. 11am- whenever

www.Cedar
CreekAs.org

Patronize our Club Sponsors

a **YANKEE's** lock **SMITH** service
 Call Us For All Your Home, Auto or Business Needs.
Call 903-888-AYLS (2957)
903-432-6715 (2957)
 Serving the Cedar Creek Lake Area since 1995

Richard Smith, Owner and Operator

EMERGENCY SERVICE AVAILABLE

 
 Licensed and Bonded - License Number B13379



Dairy Queen
 Danny Hampel & Shirley Leone
 Email: teddysdq@msn.com

Seven Points
 Hwy 274 @ 334
 903-432-3076

Kemp
 1218 S. Elm Street
 903-498-8222

Your Cedar Creek Model A Ford Club Meeting Host Since 2003

Mike's "A" Ford-able Parts
Mike Butcher

124 Model A Drive, Maysville, GA 30558
 email: mike@mikes-afordable.com - www.mikes-afordable.com
 Fax: 706 652 2492 - Phone: 706 652 3866
 1 888 TRY MIKE (879 6453)

Specialising in 1928 - 1931 Model A Ford Parts



Early Ford Radiator Reproductions
 Radiator Restorations
 Custom Built Radiators



Radiator Cores
 Flat Tube
 Round tube
 Honeycomb
 Cartridge

Heater Cores
 Fan Shrouds

www.thebrassworks.net 805.239.2501